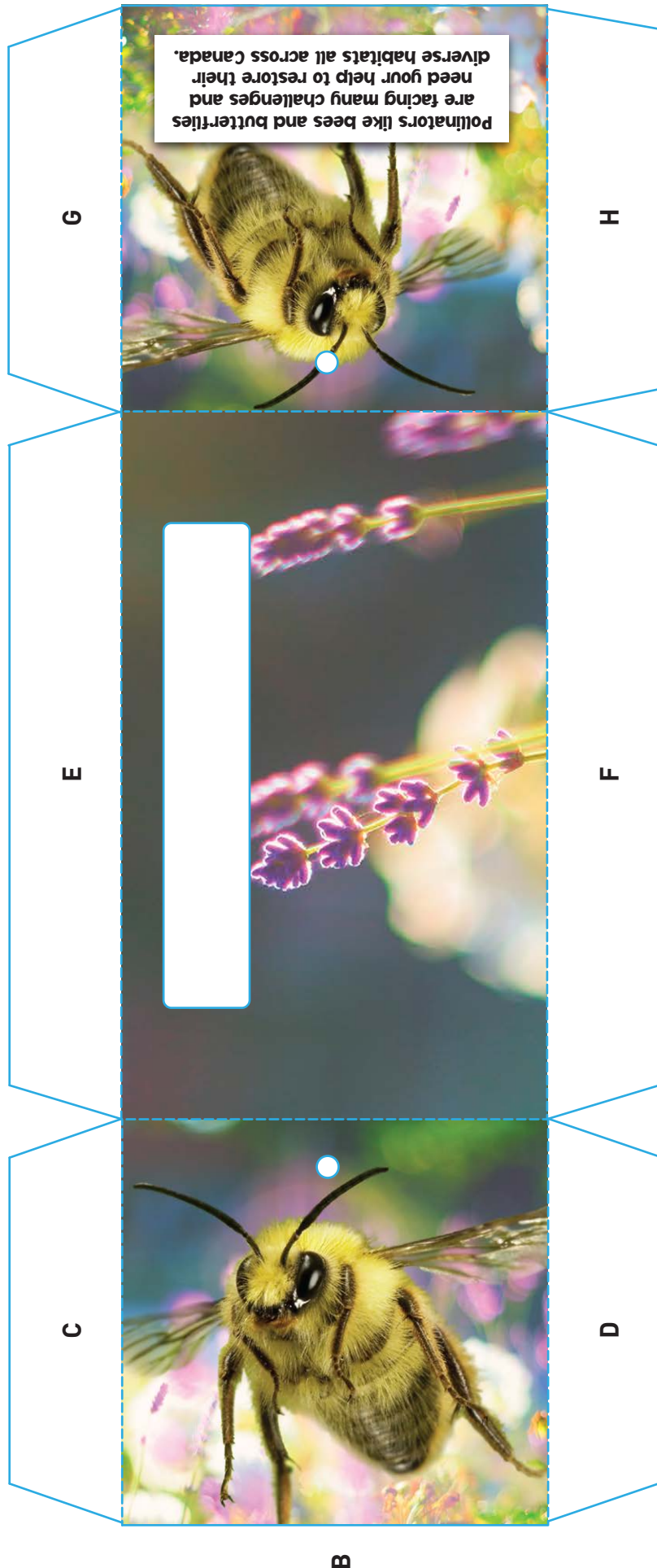


Materials:

- Empty cardboard box (a cereal box works best)
- Scissors
- A pencil
- A strong piece of string long enough to fit around your neck
- Glue
- An X-acto knife (optional - and adults only!)
- A pin (optional)

**MAKE SURE
YOU HAVE
HELP FROM
AN ADULT!**

Top Piece



Bottom Piece

E

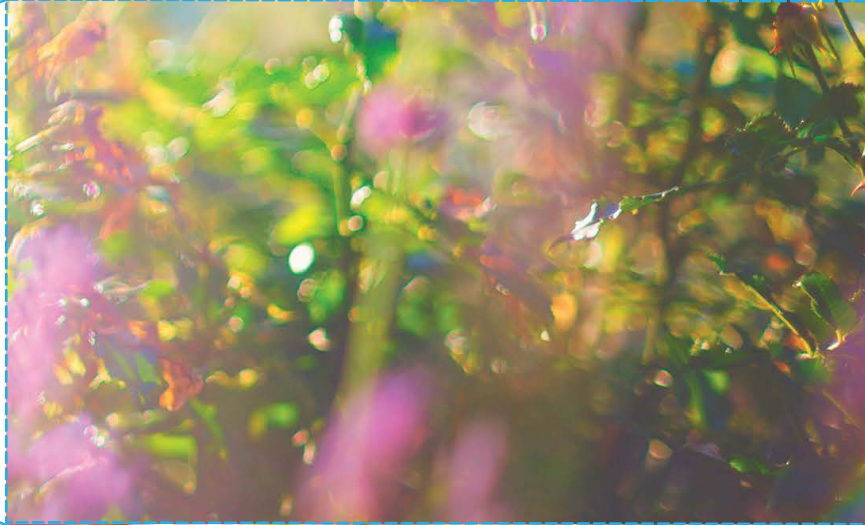
G

C



A

B



H

D



F

Instructions:

1. Cut each piece along the solid blue lines. Don't cut along the dotted lines – those are for folding only! If you have trouble cutting out the rectangular slot and the two small holes on the top piece, carefully push a pin or pencil through the paper to get a hole started.

Tip: Remember which letters go on each side. You can also pull up the template online while you are building the donation box.

2. With the printed side facing up, glue both pieces to cardboard (a cereal box is the perfect size). This will help make your box strong enough to hold change. Once the glue is dry, have an adult cut out the pieces using scissors or an X-acto knife.

3. Carefully fold the pieces along the dotted lines. You will be folding everything outwards, not inwards, so the printed side is on the outside of your donation box.

Tip: While folding, some of the edges might come unglued. Touch them up with a bit of glue before you move on to the next step.

4. Push string through the circular holes, making sure it's long enough to fit comfortably around your neck, leaving a little extra on both ends. Tie knots at both ends and make sure these knots are big enough so that the string won't slip through the holes.

5. Now it's time to glue your donation box together. Find the "A", "G" and "H" tabs and add glue to the paper side (not the cardboard side). Stick the tabs to the edges with the matching letters. Let the glue dry.

6. When the glue is dry, add glue to the paper side (not the cardboard side) of the "E" and "F" tabs and stick them to the edges with the matching letters. Let the glue dry.

7. When the glue is dry, add glue to the paper side (not the cardboard side) of the "B" "C" and "D" tabs and stick them to the edges with the matching letters. Let the glue dry.

All done? Great!

Use this box to collect donations for your Bring Back the Wild campaign.